

# The Delta Project



INTERNATIONAL  
COFFEE  
ORGANIZATION



Schweizerische Eidgenossenschaft  
Confédération suisse  
Confederazione Svizzera  
Confederaziun svizra

Swiss Confederation

Federal Department of Economic Affairs,  
Education and Research EAER  
State Secretariat for Economic Affairs SECO



Delta  
Framework

- ❑ Key Project Information
- ❑ Delta Sustainability Framework
- ❑ Process and timeline
- ❑ Sustainability goals and indicators



INTERNATIONAL  
COFFEE  
ORGANIZATION



Schweizerische Eidgenossenschaft  
Confédération suisse  
Confederazione Svizzera  
Confederaziun svizra

Swiss Confederation

Federal Department of Economic Affairs,  
Education and Research EAER  
**State Secretariat for Economic Affairs SECO**

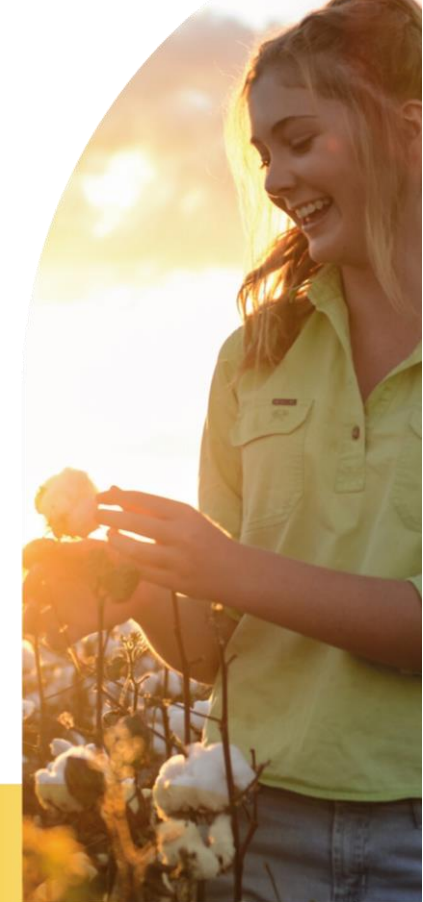


Delta  
Framework



## Delta Project Introduction

- **Funded** by SECO through the ISEAL Innovation Fund for 3 years (03-2019 to 06-2022)
- **Partners:** Better Cotton, ICAC, Global Coffee Platform, and International Coffee Organisation
- **Project's aim:** Bridging the gap in measuring and reporting sustainability performance in the agricultural commodity sector
  - ❑ **Build** multi-stakeholder, international **consensus** for sustainability measurement on key common goals
  - ❑ **Harmonize approaches** to assess progress and connect to SDG commitments from private and public sector actors
  - ❑ **Add value** for farmers from their sustainability performance data

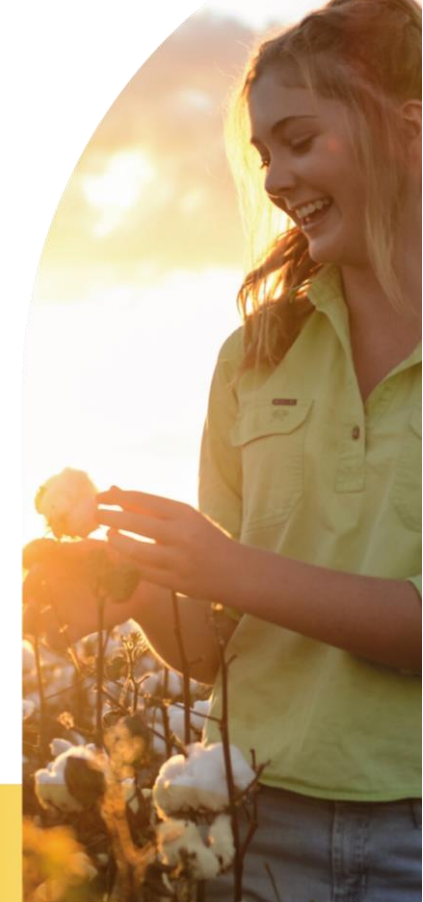






# Delta Project Objectives & Value proposition

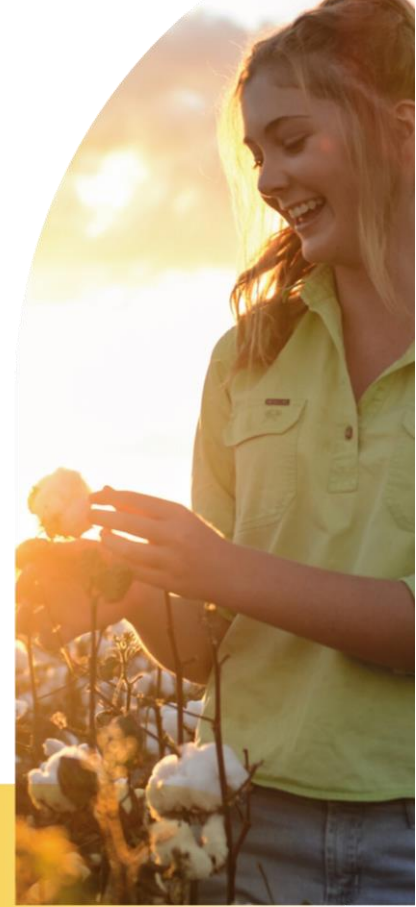
- **1. Develop a Sustainability Framework:** impact indicators, guiding principles and data standardization
  - ***For the sustainability community:** common language on sustainability across agricultural commodity sectors*
- **2. Link sustainability performance to business actors and governments:** method and guidance
  - ***For companies & private sector:** standardised sustainability information to customers/stakeholders, simplified data consolidation, consistent data collection*
  - ***For government & public sector:** SDG commitments reporting, evidence-based decision making for agricultural policies & services*





## Delta Project Objectives & Value proposition

- **3. Add value for producers:** feedback performance data to farmers, contextualise data by establishing links to open data sources (e.g. weather, market information), enhance the development of farmer-centred services (e.g. extension services, finance, insurance, etc.)
  - ***Farmers:*** better learning and decision making, (improved) access to services





# Delta Sustainability Framework



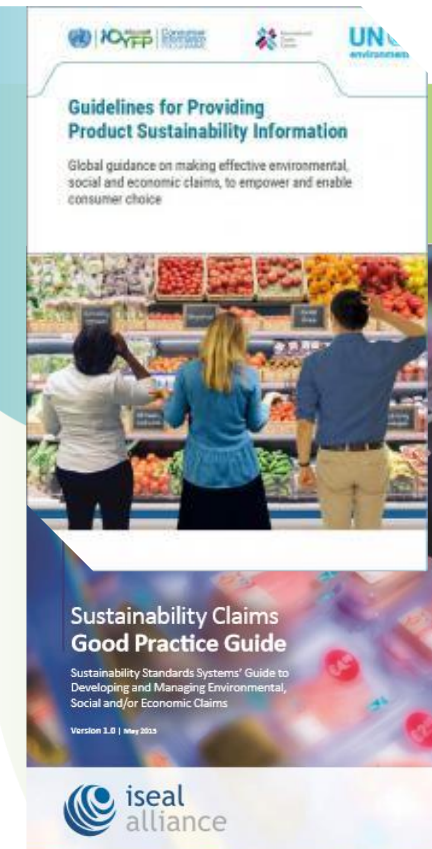


# Delta Sustainability Framework

## 3 components

### 1. Guidelines for Sector Sustainability Information – Farm level

- Define the sector's sustainability information do's and don'ts
- How to derive claims from the sustainability information generated through the common set of indicators
- How to communicate sustainability information to customers and other stakeholders, building on the principles of reliability, relevance, clarity, transparency and accessibility





# Delta Sustainability Framework

## 3 components

### ■ 2. A common set of cross-commodity impact and outcome indicators

- Farm-level
- Impact / Outcome
- Limited number
- Relevance in terms of measuring progress and capacity to adapt to other commodities

### ■ 3. Data standardization and indicators' digitization

- Standardization of data points
- Data and information quality requirements
- Confidentiality and disclosure
- Data use options





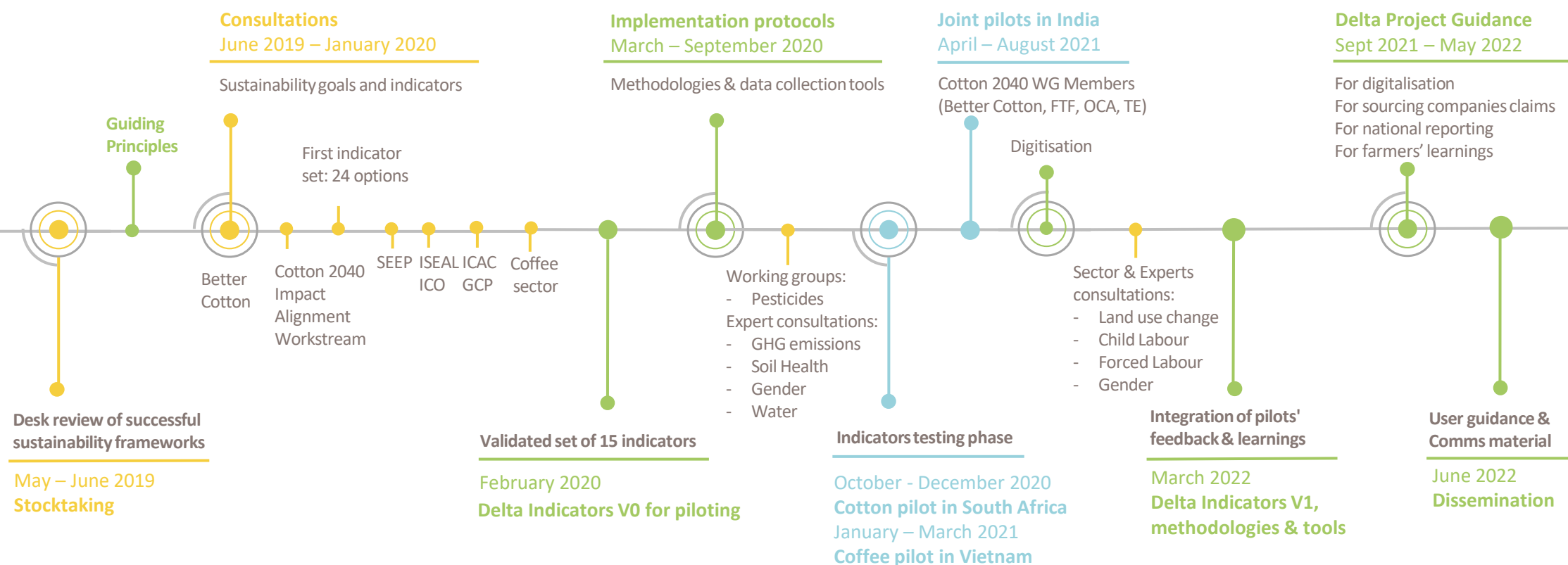


# Delta Sustainability Framework Timeline

Consultation activities

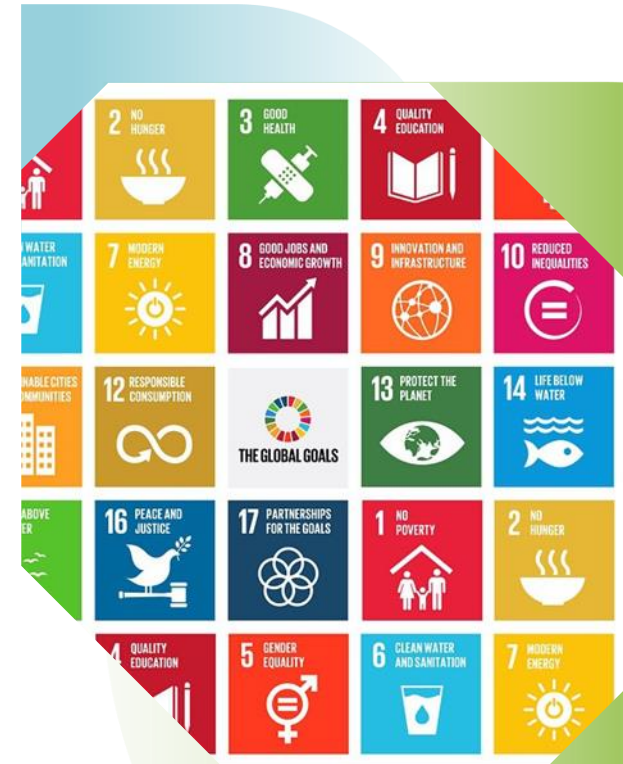
Piloting activities

Core activities and  
key deliverables





- SDG indicator framework
- ISEAL Common Core Indicators
- ICAC-SEEP framework
- GCP Coffee Data Standard





# Delta Sustainability Framework Consultations

## ■ Main purpose of the consultations

- Share and confirm key sustainability goals for the cotton and coffee sectors;
- Integrate learnings and perspectives from all stakeholders into the development of the set of Delta Sustainability Indicators;
- Foster both commodity specific and cross-commodity collaboration in the alignment of sustainability metrics

## ■ Modalities

- Physical workshops and webinars
- One-to-one calls
- On-line surveys





# Delta Sustainability Framework Consultations

**17 consultative events** have taken place, reaching out to over **120 people** representing **54 organisations** from the agricultural private and public sectors, among which:







# Delta Sustainability Goals and Indicators





# Delta Sustainability Indicators

## 3 pillars of sustainability & SDGs

Sustainability themes and sub-themes across the three pillars: environmental, economic and social





# Delta Sustainability Indicators

## Sustainability goals for cotton

**Sustainable Cotton Farming is expected to aim at the following goals:**

Headline impact areas	Environmentally sustainable agricultural practices (SDGs 3,6,12,13,14, 15)	Decent livelihoods/ poverty reduction (SDGs 1, 8, 10)	Social wellbeing, equality & empowerment (SDGs 2, 3, 6, 8, 10, 16)
Common goals	Minimise contamination of natural resources	Ensure cotton farmers and workers earn a decent income	Ensure respect human rights on cotton farms, with no forced and child labour
	Protect and regenerate ecosystem services	Make cotton farming economically viable and farmers economically resilient	Ensure healthy & safe working conditions for all farmers and workers
	Reduce greenhouse gas emissions and build resilience to climate change	Alleviate poverty	Enhance equality and empowerment, including in gender, for cotton farmers and workers





## Delta Sustainability Indicators Criteria

- **Monitor progress** towards the 9 goals and towards sustainable agricultural commodities.
  - **Relevance:** progress towards goals and credibility
  - **Usefulness:** global commitments, comparability and aggregation, stakeholders' needs
  - **Feasibility:** easy of data collection and costs.
- **15 farm-level, outcome/impact indicators**
- **Interdependences** between social, economic and environmental sustainability pillars
  - Indicator set to be seen **as a whole**.
- **Not prescriptive** on specific tools to use but setting minimum **requirements** and providing **guidance**







# Delta Sustainability Indicators

## Environmental dimension



## Environmental Indicators

### 1 Use of Highly Hazardous Pesticides (HHPs)

Unit: kg active ingredient (a.i.) of HHPs per ha of harvested land

### 2 Pesticide risk indicator

Unit: specific model score per ha of harvested land

### 3 Irrigation water management

#### 3.1 Water extracted for irrigation

Unit: water extracted for irrigation (blue water) per ha of harvested land

#### 3.1 Irrigation efficiency

Unit: percentage of water actually required for irrigation over water extracted for irrigation

#### 3.3 Water productivity

Unit: yield (kg of cotton lint or GBE) per m<sup>3</sup> of water consumed per ha of harvested land

### 4 Topsoil carbon content

Unit: grams of organic carbon per tonne soil per ha of harvested land

### 5 Fertiliser use by type and Nitrogen Use Efficiency

Unit: kg a.i. of N, P, K per ha of harvested land

### 6 Forest, wetland and grassland converted for crop production

Unit: ha of forest, wetland or grassland converted to crop production

### 7 Greenhouse gas emissions

Unit: kg CO<sub>2</sub> equivalent per kg seed cotton or coffee cherries



# Delta Sustainability Indicators

## Economic dimension



### Economic Indicators

**8 Yield (average)**

Unit: kg cotton lint or GBE per ha of harvested land

**9 Gross margin from crop production**

Unit: USD per ha seed cotton or GBE

In future: Living Income

**10 Price at farmgate** (for premium-based organisations)

Unit: local currency per tonne of seed cotton or GBE

**11 Proportion of workers earning a legal minimum wage (or above) by sex and by age**

Unit: proportion (%) of workers earning a legal minimum wage (or above) over the total number of workers working on the farm by sex and age

Units: **GBE** coffee Green Bean Equivalent; **ha** hectare; **kg** kilogram



# Delta Sustainability Indicators

## Social dimension



### Social Indicators

**12 Incidence of child labour**

Unit: number of children aged 5 to 17 years engaged in child labour, by sex and age

**13 Incidence of forced labour**

Unit: number of people aged over 17 years engaged in forced labour, by sex and age

**14 Women's empowerment**

Unit: Women's Empowerment score

**15 Frequency of fatalities and non-fatalities on the farm**

Unit: % of fatalities and non-fatal occupational injuries on farm (while working on the cotton or coffee crop)

Units: **GBE** coffee Green Bean Equivalent; **ha** hectare; **kg** kilogram



Do you want to provide feedback  
or pilot the indicators?

→ [Contact Us – Delta Framework](#)



INTERNATIONAL  
COFFEE  
ORGANIZATION

[www.deltaframework.org](http://www.deltaframework.org)