

The Delta Project



INTERNATIONAL
COFFEE
ORGANIZATION



Schweizerische Eidgenossenschaft
Confédération suisse
Confederazione Svizzera
Confederaziun svizra

Swiss Confederation

Federal Department of Economic Affairs,
Education and Research EAER
State Secretariat for Economic Affairs SECO



Delta
Framework

- ❑ Key Project Information
- ❑ Delta Sustainability Framework
- ❑ Process and timeline
- ❑ Sustainability goals and indicators



INTERNATIONAL
COFFEE
ORGANIZATION



Schweizerische Eidgenossenschaft
Confédération suisse
Confederazione Svizzera
Confederaziun svizra

Swiss Confederation

Federal Department of Economic Affairs,
Education and Research EAER
State Secretariat for Economic Affairs SECO

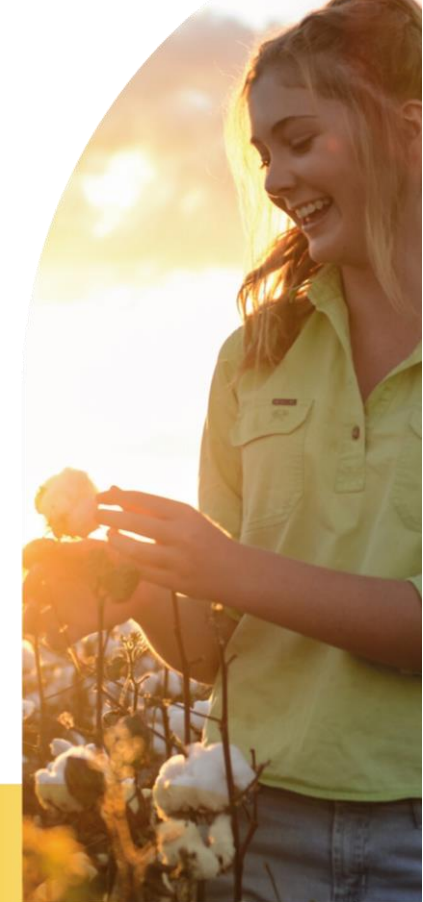


Delta
Framework



Delta Project Introduction

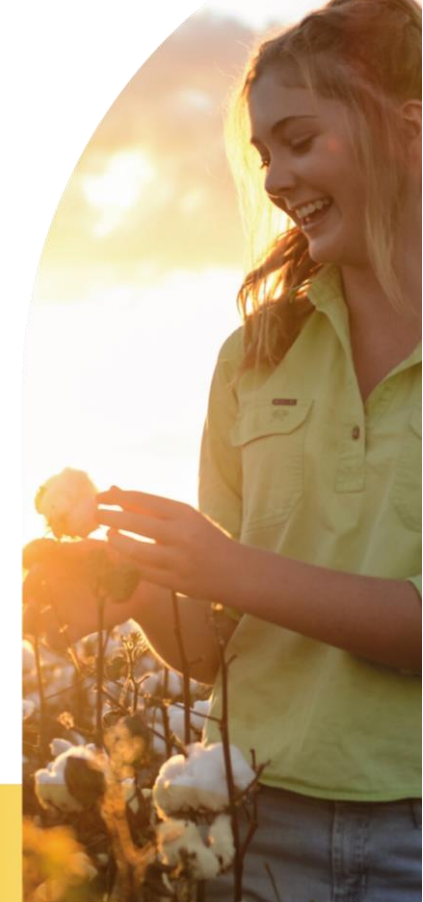
- **Funded** by SECO through the ISEAL Innovation Fund for 3 years (03-2019 to 03-2022)
- **Partners:** BCI, ICAC, Global Coffee Platform, and International Coffee Organisation
- **Project's aim:** Bridging the gap in measuring and reporting sustainability performance in the agricultural commodity sector
 - ❑ **Build** multi-stakeholder, international **consensus** for sustainability measurement on key common goals
 - ❑ **Harmonize approaches** to assess progress and connect to SDG commitments from private and public sector actors
 - ❑ **Add value** for farmers from their sustainability performance data





Delta Project Objectives & Value proposition

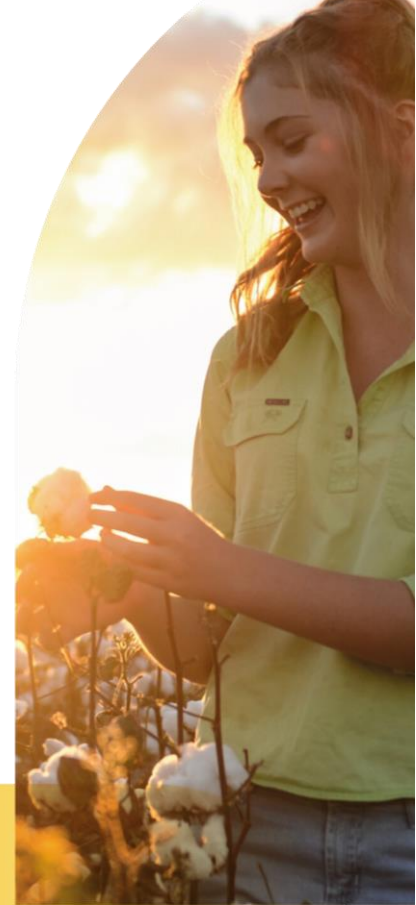
- **1. Develop a Sustainability Framework:** impact indicators, guiding principles and data standardization
 - ***For the sustainability community:** common language on sustainability across agricultural commodity sectors*
- **2. Link sustainability performance to business actors and governments:** method and guidance
 - ***For companies & private sector:** standardised sustainability information to customers/stakeholders, simplified data consolidation, consistent data collection*
 - ***For government & public sector:** SDG commitments reporting, evidence-based decision making for agricultural policies & services*





Delta Project Objectives & Value proposition

- **3. Add value for producers:** feedback performance data to farmers, contextualise data by establishing links to open data sources (e.g. weather, market information), enhance the development of farmer-centred services (e.g. extension services, finance, insurance, etc.)
 - ***Farmers:*** better learning and decision making, (improved) access to services





Delta Sustainability Framework



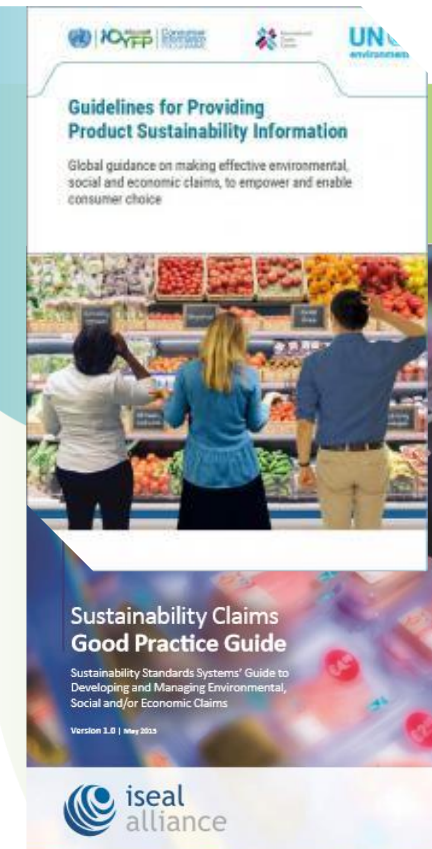


Delta Sustainability Framework

3 components

1. Guidelines for Sector Sustainability Information – Farm level

- Define the sector's sustainability information do's and don'ts
- How to derive claims from the sustainability information generated through the common set of indicators
- How to communicate sustainability information to customers and other stakeholders, building on the principles of reliability, relevance, clarity, transparency and accessibility





Delta Sustainability Framework

3 components

■ 2. A common set of cross-commodity impact and outcome indicators

- Farm-level
- Impact / Outcome
- Limited number
- Relevance in terms of measuring progress and capacity to adapt to other commodities

■ 3. Data standardization and indicators' digitization

- Standardization of data points
- Data and information quality requirements
- Confidentiality and disclosure
- Data use options



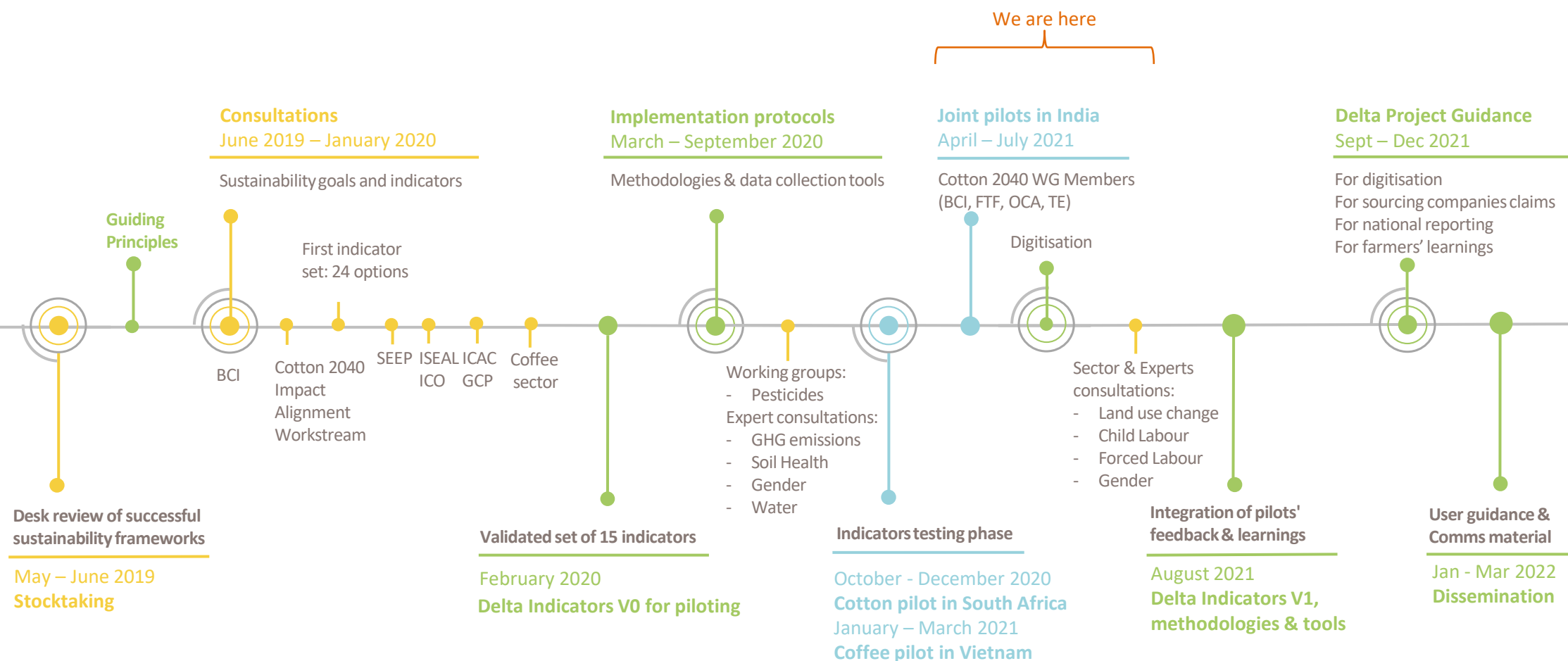


Delta Sustainability Framework Timeline

Consultation activities

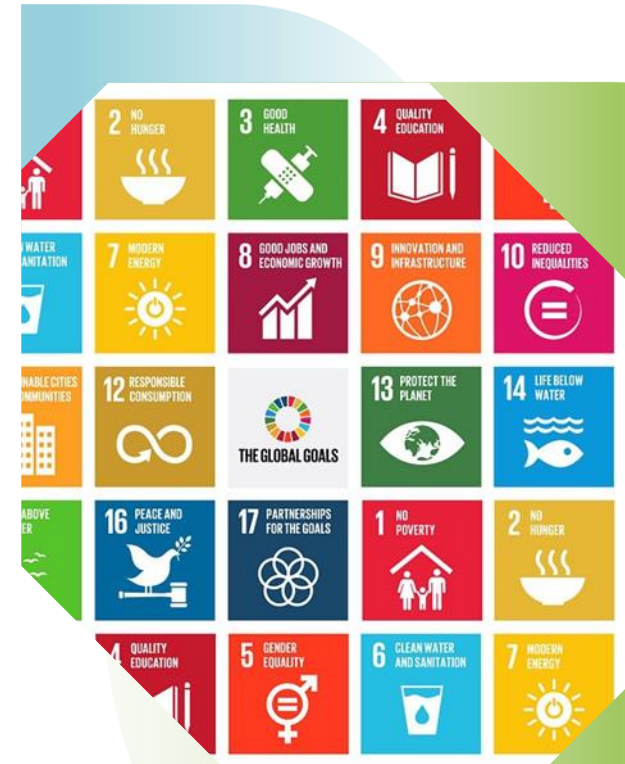
Piloting activities

Core activities and
key deliverables





- SDG indicator framework
- ISEAL Common Core Indicators
- ICAC-SEEP framework
- GCP Coffee Data Standard





Delta Sustainability Framework Consultations

■ Main purpose of the consultations

- Share and confirm key sustainability goals for the cotton and coffee sectors;
- Integrate learnings and perspectives from all stakeholders into the development of the set of Delta Sustainability Indicators;
- Foster both commodity specific and cross-commodity collaboration in the alignment of sustainability metrics

■ Modalities

- Physical workshops and webinars
- One-to-one calls
- On-line surveys





Delta Sustainability Framework Consultations

17 consultative events have taken place, reaching out to over **120 people** representing **54 organisations** from the agricultural private and public sectors, among which:





Delta Sustainability Goals and Indicators



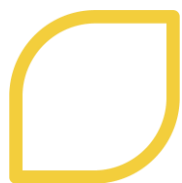


Delta Sustainability Indicators

3 pillars of sustainability & SDGs

Sustainability themes and sub-themes across the three pillars: environmental, economic and social





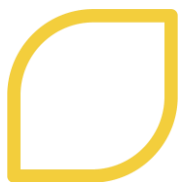
Delta Sustainability Indicators

Sustainability goals for cotton

Sustainable Cotton Farming is expected to aim at the following goals:

Headline impact areas	Environmentally sustainable agricultural practices (SDGs 3,6,12,13,14, 15)	Decent livelihoods/ poverty reduction (SDGs 1, 8, 10)	Social wellbeing, equality & empowerment (SDGs 2, 3, 6, 8, 10, 16)
Common goals	Minimise contamination of natural resources	Make cotton farmers and workers earn a decent income	Ensure respect human rights on cotton farms, with no forced and child labour
	Protect and regenerate ecosystem services	Be economically viable and farmers to be economically resilient	Ensure healthy & safe working conditions for all farmers and workers
	Reduce greenhouse gas emissions and build resilience to climate change	Alleviate poverty	Enhance equality and empowerment, including in gender, for cotton farmers and workers





Delta Sustainability Indicators Criteria

- **Monitor progress** towards the 9 goals and towards sustainable agricultural commodities.
 - **Relevance:** progress towards goals and credibility
 - **Usefulness:** global commitments, comparability and aggregation, stakeholders' needs
 - **Feasibility:** easy of data collection and costs.
- **15 farm-level, outcome/impact indicators**
- **Interdependences** between social, economic and environmental sustainability pillars
 - Indicator set to be seen **as a whole**.
- **Not prescriptive** on specific tools to use but setting minimum **requirements** and providing **guidance**





Delta Sustainability Indicators

Environmental dimension



Environmental Indicators

- 1 Use of Highly Hazardous Pesticides (HHP)**
Unit: kg active ingredient (a.i.) of HHP per ha of harvested land
- 2 Pesticide risk indicator**
Unit: risk model based on kg a.i. of pesticides applied per ha of harvested land
- 3 Irrigation Water Management**
 - 3.1 Water extracted for irrigation**
Unit: water extracted for irrigation (blue water) per ha of harvested land
 - 3.1 Irrigation efficiency**
Unit: percentage of water actually required for irrigation over water extracted for irrigation
 - 3.3 Water productivity**
Unit: yield (kg of cotton lint or GBE) per m³ of water consumed per ha of harvested land
- 4 Top soil carbon content**
Unit: grams of organic carbon per tonne soil per ha of harvested land
- 5 Fertiliser use by type**
Unit: kg a.i. of N, P, K per ha of harvested land
In future: Nitrogen Use Efficiency
- 6 Forest, wetland and grassland converted for cotton or coffee production**
Unit: ha of forest, wetland or grassland converted to cotton or coffee production
- 7 Greenhouse gas emissions**
Unit: kg CO₂ equivalent per kg cotton lint or GBE



Delta Sustainability Indicators

Economic dimension



Economic Indicators

8 Average yield

Unit: kg cotton lint or GBE per ha of harvested land

9 Gross margin from cotton and coffee production

Unit: USD per ha seed cotton or GBE

In future: Living Income

10 Price at farm gate (for premium-based organisations)

Unit: local currency per tonne of seed cotton or GBE

11 Proportion of workers earning a legal minimum wage

Unit: daily average earnings for farm labour compared to (rural) minimum wage in USD or local currency, by gender

Units: GBE coffee Green Bean Equivalent; ha hectare; kg kilogram



Delta Sustainability Indicators

Social dimension



Social Indicators

12 Incidence of the worst forms of child labour

Unit: number of children aged 5 to 17 years engaged in child labour, by sex and age

13 Incidence of forced labour

Unit: number of people aged over 17 years engaged in forced labour, by sex and age

14 Women's empowerment

Composite indicator assessing leadership, decision-making and control of economic assets

15 Frequency of fatalities and non-fatalities on the farm

Unit: percentage of fatalities and non-fatal injuries in the reference group, by gender

Units: GBE coffee Green Bean Equivalent; ha hectare; kg kilogram



Do you want to provide feedback
or pilot the indicators?

→ [Contact Us – Delta Framework](#)